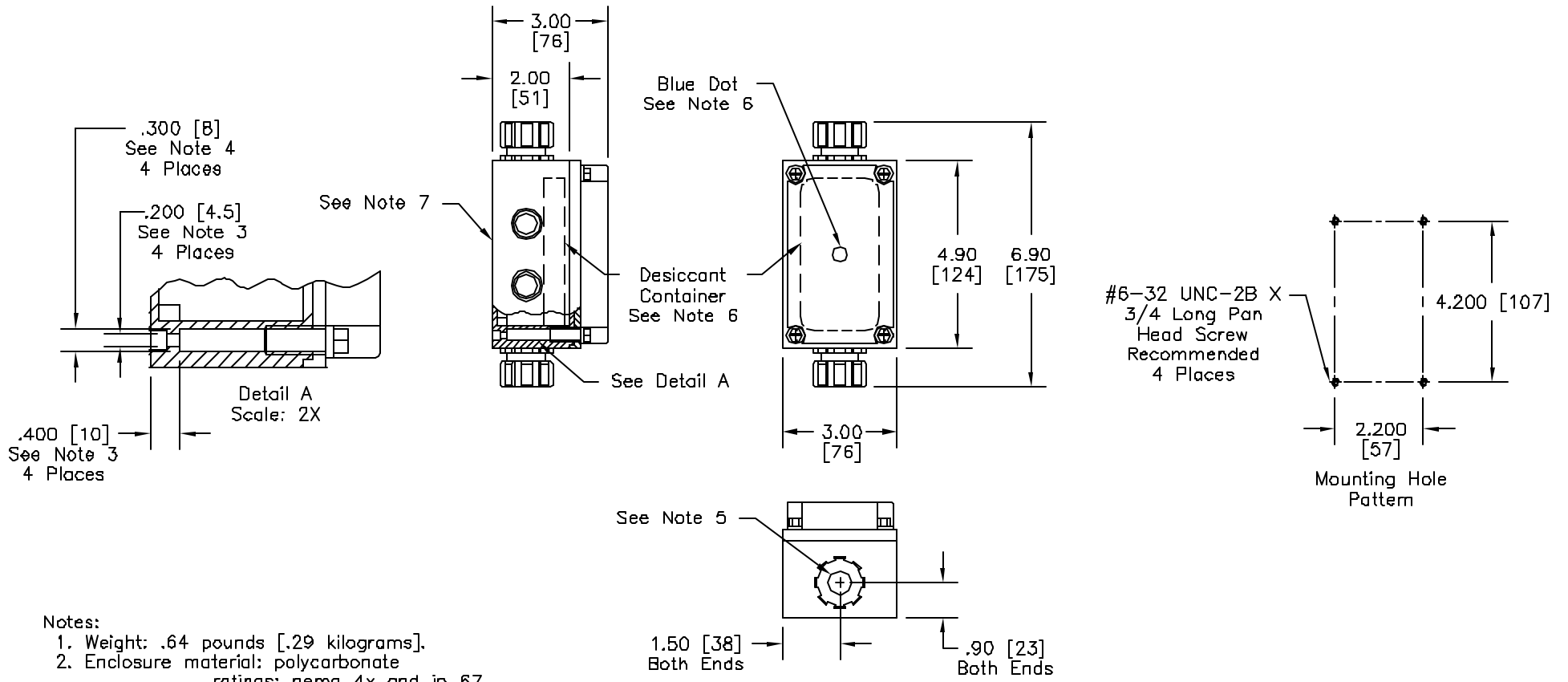


REV	REVISIONS	DATE	APP'D
A	Original Release	1/02	EDC



- Notes:
1. Weight: .64 pounds [.29 kilograms].
 2. Enclosure material: polycarbonate ratings: nema 4x and ip 67 flammability: ul 94-v2
 3. Major diameter of mounting Hardware must clear the diameter shown. Mounting hardware must be longer than dimension shown.
 4. Head of mounting hardware must clear diameter shown.
 5. Both fittings have a gland installed for cable diameter .275 [7] to .340 [9], this gland accepts the cable from the cell. Two additional glands cable diameters .340 [9] to .422 [11] and .422 [11] to .472 [12], are supplied for customer wiring.
 6. Desiccant container is used with gauge cell only. When blue dot turns pink, remove the container from the junction box. Bake at 300°F (149°C) for three hours, dot will turn blue. Install container back into box. Desiccant container can be regenerated over and over.
 7. A 1/16 [1.5] diameter hole is drilled into the bottom of the enclosure (gauge cell only). Do not mount the enclosure in an area where moisture can directly enter the box through the hole

DIMS ARE INCHES [mm] ALL METRIC DIMENSIONS ARE DERIVED FROM INCHES		JOWA Consilium			
.X± .06 ∠ ± 1/2' .XX± .030 .XXX± .010					
		Specification Junction Box			
DRN: MAP	5/24/00	A	1923800	REV. A	
CKD:					
NEXT ASSY	USED ON	APPD: EDC	1/17/01	SCALE: 1:4	SHEET 1 OF 1